



NEW

YSI 5200 Recirculating System Monitor

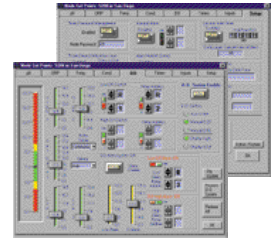
Packed With Features!

Designed specifically for Aquaculture Recirculating Systems, the new YSI 5200 Recirculating System Monitor and AquaManager™ Software integrate process control, feeding, alarming and data management into one product. Simple enough to monitor one tank, powerful enough to manage a full scale farming operation from anywhere in the world.

- **Multiparameter:** DO, Temperature, Conductivity, pH, ORP, Salinity
- **Internet ready TCP/IP communications port***
- **Conditional feed timer***
- **Multi-instrument networking capability***
- **Plug-and-play...easy to install and maintain**
- **Flexible dosing and control software**
- **Remote paging**

New! The conditional feed timer manages food delivery based on user's preset criteria. Feedings can be increased over a specific length of time, or decreased based on water quality parameters.

Optional AquaManager™ Windows™-based software links data management, system management, and networking to the desktop and internet. Browser-based format makes navigation, setup and maintenance easy.



Who's
Minding
the Planet?™

*A powerful, cost-effective
solution for monitoring
aquaculture recirculating
systems*





To order or for more information, contact YSI Environmental.

800 897-4151

www.YSI.com

YSI Environmental
937 767-7241
Fax 937 767-9353
aquaculture@YSI.com

YSI Massachusetts
508 748-0366
Fax 508 748-2543
aquaculture@YSI.com

YSI Environmental
European Support Centre
44 1252 514 164
Fax 44 1252 371 476
europe@YSI.com

YSI (Hong Kong) Limited
852 2891 8154
Fax (852) 2834 0034
hongkong@YSI.com

YSI/Nanotech (Japan)
81 44 222 0009
Fax 44 221 1102
nanotech@YSI.com

YSI (Qingdao) Limited
(86 532) 389 6648
Fax (86 532) 389 6647
china@YSI.com

ISO 9001
ISO 14001

Printed in USA 0301 W12-01



YSI 5200 System Specifications

Conductivity	Sensor type	4 electrode, Cell constant of 5.0 ±5%
	Range	0-200 mS, 0-2000 mS, 0-20 mS, 0-200 mS
	Resolution	0.1 mS 200 mS range, 1 mS 2000 mS range, 0.01 mS range 20 mS range, 0.1 mS 200 mS range
	Accuracy	±0.5% of range
Dissolved Oxygen (Automatic Salinity Compensation)	Sensor type	Membrane covered steady state polarographic
	Range	0 to 500% air saturation 0 to 60 mg/L
	Resolution	0.1% or 0.01 mg/L (0- 10 mg/L), 1% or 0.1 mg/L (10-60 mg/L)
	Accuracy	±2% or ±0.2 mg/L whichever greater (0-200%), ±6% of reading (200- 500%)
	System response time	98% of reading in 5 minutes
ORP	Range	- 1000 mV to + 1000 mV
	Resolution	1 mV
	Accuracy	± 10 mV
pH	Range	0.0 to 14.0 pH
	Resolution	0.01 pH
	Accuracy	0.1 pH
Salinity	(calculation from temperature and conductivity)	
	Range	0 to 80 ppt
	Resolution	0.1 ppt
	Accuracy	± 2 % or ± 0.1 ppt
Temperature	Sensor type	10,000 ohm @ 25 °C thermistor
	Range	0 to 45 °C, 32 to 113 °F
	Resolution	0.1 °C
	Accuracy	± 0.2 °C
Timers	4 ea General purpose timers, 1 start & 1 stop time per 24 hour period 1 ea Feed timer with conditional settings for DO, Temp and pH (feeder not supplied)*	
Communication Ports	1 ea RS485 Full Duplex* 1 ea RS232-C Serial Communication 1 ea TCP/IP Serial Communication (RS232)*	
Data Logger	32K Memory – 750 sample data sets User selectable save rate	
Warranty	2 years on instrument 1 Year on probes and cable	
Auxiliary Inputs	2 ea inputs - 1 ea analog (0 to 1.0 VDC or 0 to 5.0 VDC selectable) 1 ea digital with counter capability (contact open/close w/current source)	
	Electrical Safety	UL, CUL and CE (approvals pending)
Instrument Operating Range	Temperature - 15 to 70 °C (23 to 158 °F) Direct exposure to outside conditions NEMA 4X Enclosure	
	Output Relays	4 ea 10 amp 120 VAR SPDT relays configurable for parameter, control and/or alarm
	Power Requirements (DC operation)	Nominal
Operating Range		8.5 to 16.5 VDC (below 8.5 VDC reverts to optional battery back up)
Operating Current		500 - 800 mA depending on mode of operation
Display	2 x 16 character, extended temperature range LCD (Liquid Crystal Display) with backlight	
Size	Height:	6.5"
	Length:	8.5"
	Depth:	4.75"

* Available Quarter 2, 2001. Only user software upgrade required.
Windows™ is a registered trademark of Microsoft Corporation.