



YSI Environmental

Real-time  
Solutions for  
Monitoring

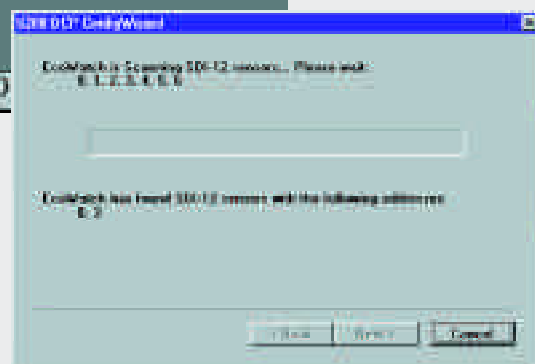
*Pure Data for a Healthy Planet™*



**YSI Environmental**  
**6200 Data Acquisition Systems**

[www.YSI.com](http://www.YSI.com)

# Connect & Go Application Configurations



1. Connect your YSI 6-Series instrument and meteorological sensors to the YSI 6200DAS. All sensors have unique connectors, so you'll do it correctly. Now apply power.
2. Connect your YSI 6200DAS to your PC with the communications cable.
3. Run EcoWatch DCP software.
4. Click on the 6200 menu, then click new.
5. Type your file name, click OK and you're ready. The system automatically detects what sensors you've connected and which parameters you want to measure. Just set the sample rate and you're collecting data. Add sensors and field stations whenever you need them.

# Applications



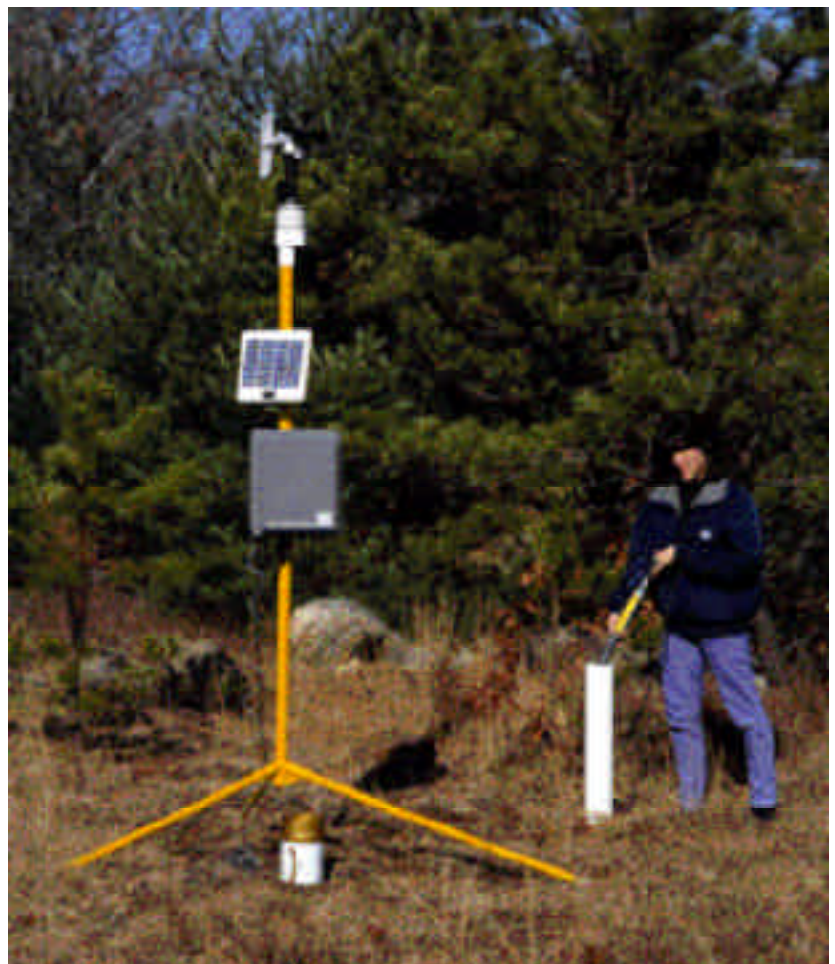
Buoy-Based Real-Time Data Acquisition of Coastal Water Quality



Event-Actuated, Early-Warning Alarm System Monitoring Industrial Effluent. The 6200 Monitors and Controls Pumps Based on pH and Dissolved Oxygen



Hydrological, Meteorological and Water Quality Monitoring



Groundwater Quality and Meteorological Real-Time Data Acquisition



**To order or for more information, contact YSI Environmental.**

**800 897-4151**

**www.YSI.com**

YSI Environmental  
937 767 7241  
Fax 937 767 9353  
support@YSI.com

YSI Massachusetts  
508 748 0366  
Fax 508 748 2543  
support@YSI.com

YSI Environmental  
European Support Centre  
44 1252 541 164  
Fax 44 1252 371 476  
europe@YSI.com

YSI (Hong Kong) Limited  
852 2891 8154  
Fax 852 2834 0034  
hongkong@YSI.com

YSI/Nanotech (Japan)  
81 44 222 0009  
Fax 81 44 222 1102  
nanotech@YSI.com

YSI (Qingdao) Limited  
86 532 389 6648  
Fax 86 532 389 6647  
china@YSI.com

**ISO 9001**  
**ISO 14001**

EcoWatch, EcoWatch DCP, Pure Data for a Healthy Planet and Who's Minding the Planet? are registered trademarks of YSI Incorporated. Windows is a registered trademark of Microsoft Corporation.

## YSI 6200 Instrument Specifications

Remote Data Acquisition System	Electronic Hardware	18-bit analog to digital conversion; 32-bit microcontroller 3 serial communication channels; 512 KB program space 2 KB EPROM; 8 KB data storage Hardware watchdog and power monitor Battery-backed data storage memory and real-time clock
	Software (Firmware)	Zenosoft™ version 1.83 or higher
Data Communications	Direct Cable	RS232
	Radio	2 watts, 2-way
	Telephone Modem	Hayes-compatible
	Cellular Modem	Wireless phone modem
Data Management	Hardware	YSI EcoWatch DCP™, compatible with Windows™ NT, Windows 98, Windows 2000
	PC Requirements	PC 386 with 4 MB RAM, 4 MB hard disk, minimum PC 486DX with 8 MB RAM, 4 MB hard disk, recommended
Power	Battery	Sealed lead-acid get type, 12 VCD
	Line	100 to 240 VAC, 50 to 60 Hz
	Solar	10 Watts, 20 VCD (no load), 0.6 A maximum current
Environmental	Operating Temperature	-40 to +60°C (-40 to +140°F)
	Enclosure	33 x 38 x 15.2 cm (13 x 15 x 6 in) fiberglass, NEMA 4x

**Trust our systems capabilities, our customers do...**

**Connecticut DOT**

**Connecticut DEP**

**University of North Carolina, Wilmington**

**Duke University**

**Onodaga County**

**Narragansett Bay Commission**

**University of New Hampshire**

**Montgomery Watson, Inc.**

**Jacobs Engineering**

**Brookhaven Labs**

**Gillette Inc.**