

CONFIGURED SYSTEMS

Modular “Connect-and-Go” data collection platforms are designed to collect and transmit environmental data to a base station, where it can be analyzed and used to understand and control environments.

YSI 6200 Data Acquisition System

A complete system that monitors, logs, and communicates real-time water quality and meteorological data from single or multiple remote locations. The YSI 6200 Data Acquisition System lets you plug in your sensors with no wiring or user programming. EcoWATCH™ for Windows™ automatically detects and configures your system.

The YSI 6200 enables you to monitor hard-to-reach sites, eliminating the need for frequent trips to the monitoring area. It lets you respond to events as they happen and allows you to track ongoing events and detect trends and events that spot checks may not reveal.



[8 0 0 7 6 5 - 4 9 7 4]



Step 1

Connect your YSI 6-Series instrument and meteorological sensors to the YSI 6200, then apply power. All sensors have unique connectors, so you'll do it correctly.



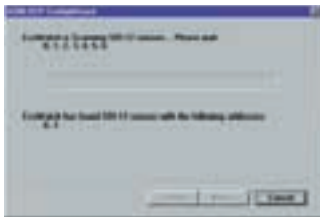
Step 2

Connect your YSI 6200 to your PC with the communications cable.



Step 3

Run EcoWatch™ software and it will automatically detect and configure your system for optimum deployment.



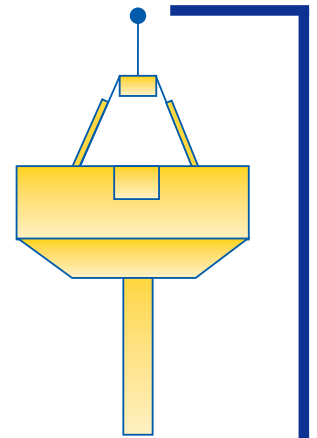
Step 4

Click on the 6200 menu, then click NEW. The system automatically detects what sensors you've connected and which parameters you want to measure.

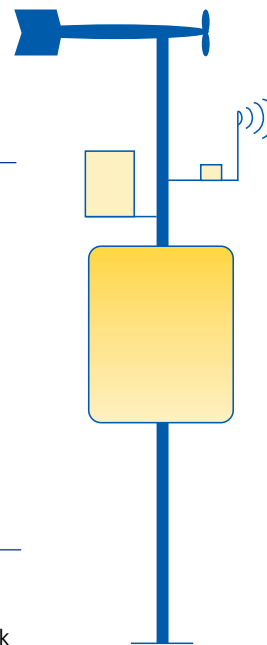


Step 5

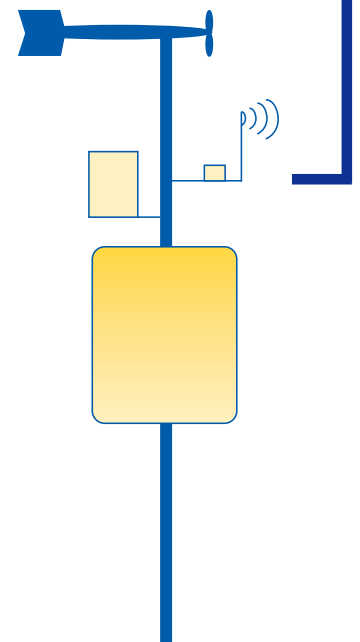
Type your file name, click OK and you're ready. Just set the sample rate and collect the data. Add sensors and field stations whenever you need them.



Field Buoy Site

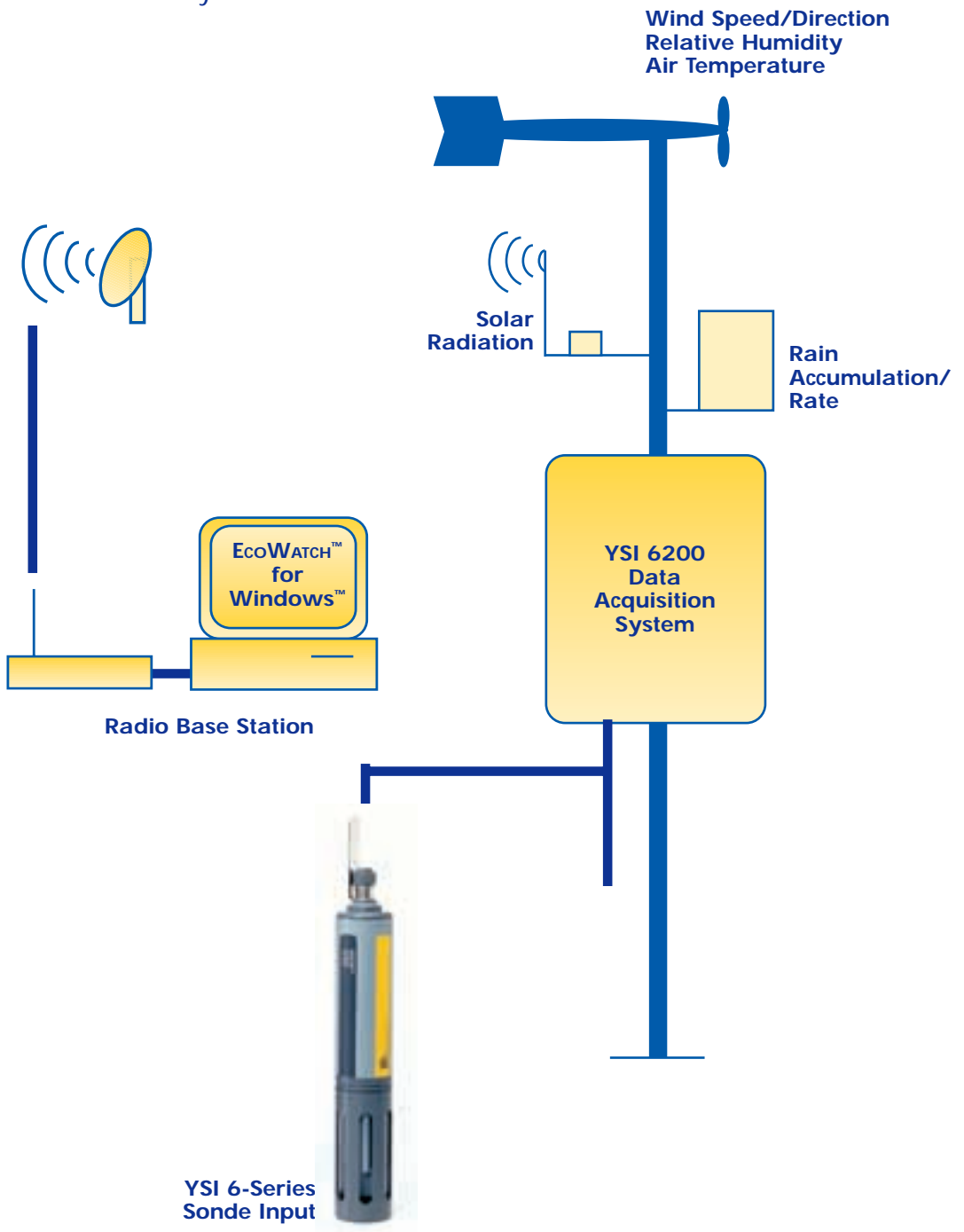


Field Station 2



Field Station 3

The YSI 6200 manages sensor sampling, data buffering, and cellular and radio telemetry to a base station. The weather-tight and self-contained system can be deployed on shore or on a buoy. When needed, the system serves as a radio repeater for more distant YSI 6200 systems.



[8 0 0 7 6 5 - 4 9 7 4]

BUILDING BLOCK APPROACH

Configure your YSI 6200 system based on your specific application. Units can be matched with single or multiple YSI 6-Series sondes, telemetry options, fixtures such as towers and buoys, accessories such as meteorological units, and base stations with EcoWATCH™ for Windows™ data collection software.

YSI Base Stations

Use IBM-compatible computers to control one or more (up to 99) data collection platforms. The base station communicates with Data Acquisition Systems via networks and telemetry equipment.



EcoWATCH™ for Windows™

Enables real-time data acquisition with digital radio communications to perform all setup operations, adjustments, and data collection for remote environmental monitoring of distant locations. A broad range of sensors, repeater capability, alarm, and control capability are standard equipment.

Telemetry Options

Include radio, cellular or hard-line telephone modems, and/or GOES or ARGOS satellite equipment.

YSI Floating Platforms

Provide mounting for solar panels, battery packs, and telemetry. Data Acquisition electronics include antennas, meteorological sensors, mooring assemblies, and collision lamps. Environmental Monitoring Modules are available with 550, 800, and 2000 pounds of buoyancy (250, 363, 907 kg).



Oceanographic Monitoring Products and Systems

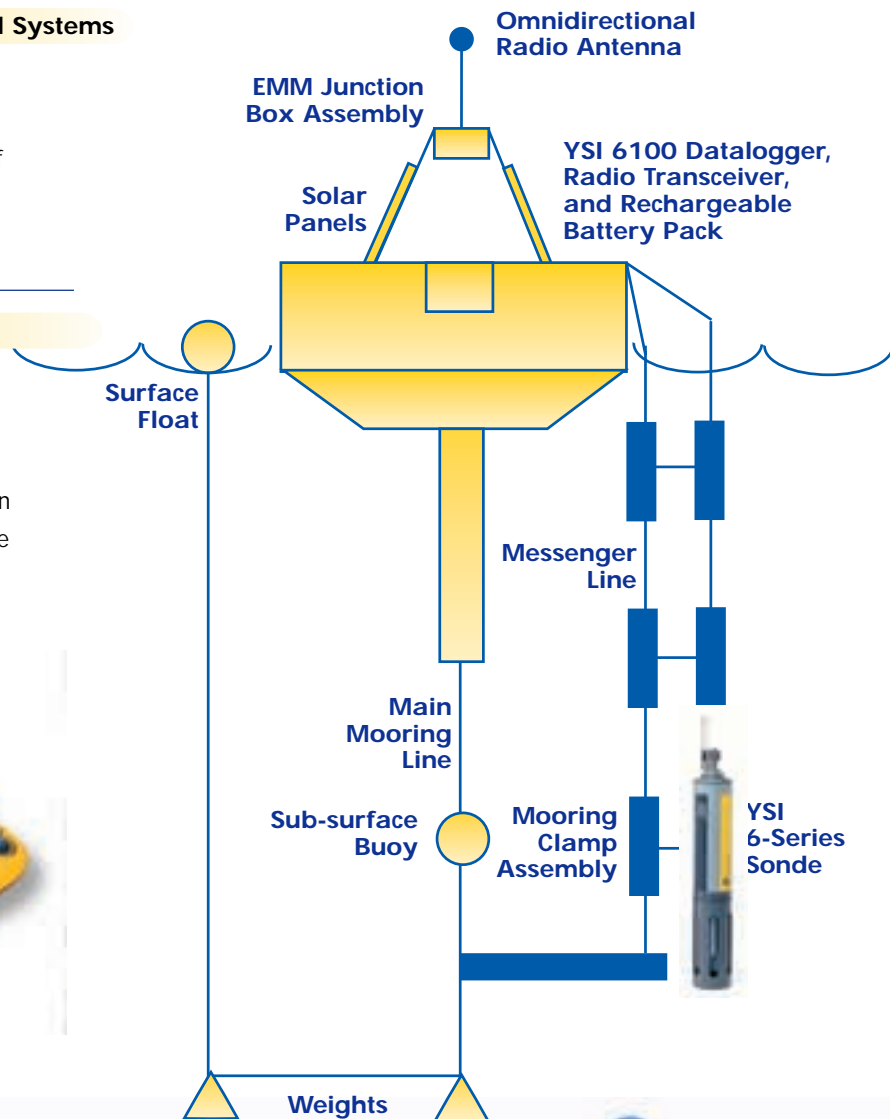
Include the YSI 1156 Directional Wave-Track Buoy, which accurately measures wave height, period, and direction with total remote control of the onboard sensors.

Towed Underwater Vehicles and Cables

Options include the V-Fin — a stable, light-weight, portable instrument that can collect and record data while a ship is moving. With low drag, minimum noise, and high stability, the V-Fin collects better data because it is towed below the noise and vibration of the ship. Choose from 20 standard models or a custom design.



Typical Monitoring Buoy



YSI 6200 Selection Options

Use this options list to zero-in on your needs, then call a YSI Massachusetts technical representative and take advantage of 40 years of application expertise.

Application Types: well, tank, ocean, coast, reservoir, lake, or stream

Sonde Options: YSI 600R, 600XL, 600XLM, 6820, 6920, or 6600

Power Sources: AC, battery, or solar

Telemetry Options: radio, cellular, hard-line, or satellite

Fixture Types: tower, bracket buoy (lg), buoy (sm), or V-Fin

Accessories: EcoWATCH, MET, or other sensors

